



### DUTRO 3-WAY CONVERTIBLE HAND TRUCK

The multi-purpose hand truck. Converts to a platform truck or a tripod truck instantly. Fold out tube-steel nose extension assists with balancing large loads. 4" casters allow freedom of movement in kick-back or platform modes. 1 5/8" x 8" mold-on rubber wheels. 50" high upright.

800 lb. capacity as a hand truck.

600 lb. capacity as a kick-back dolly.

800 lb. capacity as a platform truck.

**Model # D120** 50" H 62 lbs.



### DUTRO 808 SHOVEL NOSE HAND TRUCK

The perfect dolly for moving furniture in your warehouse. 3/4" tube steel construction for durability. Shovel nose toe plate (17 1/2" x 14" x 14") allows for larger loads. Taller frame gives more leverage over heavy loads. 2 1/2" x 8" balloon tires. 900 lb. capacity

**Model # D808B** 49 1/2" H 55 lbs.

### DUTRO 828 SHOVEL NOSE HAND TRUCK

Similar to the 808 hand truck, the 828B has a taller frame for those taller loads.. 3/4" tube steel construction for durability. Shovel nose toe plate (17 1/2" x 14" x 14") allows for larger loads. Taller frame gives more leverage over heavy loads. 2 1/2" x 8" balloon tires. 900 lb. capacity

**Model # D828B** 61 3/4" H 55lbs.



**HAND TRUCKS**

Commercial grade delivery trucks for the man on the job. Rugged tube steel or aluminum construction. Designed for easier carton handling. 7" x 13" nose plate. 8" rubber wheels. Metal stair glides. 500 lb. capacity.

**Double Loop Handles**

**Model # 58PMDL** Steel 55" H 38 lbs.

**Model # A-600** Alum. 55" H 22 lbs.

**Single Pin Handle**

**Model # 58PMP** Steel 55" H 32 lbs.

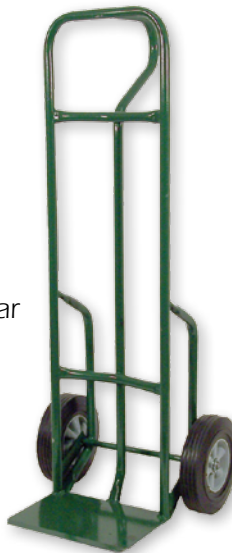
**Model # A-601** Alum. 55" H 21 lbs.



**EXTRA HEAVY DUTY HAND TRUCK**

Designed for rugged use and heavier loads. Tube steel construction. Reinforced 9" x 14" nose plate provides maximum strength. Popular single loop handle. 10" rubber wheels with stair glides. 1,000 lb. capacity.

**Model # 2783** 51" H 40.5 lbs.



**HAND TRUCK COVER**

Made of the same fine material and durable construction as our furniture pads. Pad has velcro straps on the back to secure it to the dolly frame.

**Model # HTC-S** 14" x 51"

**Model # HTC-L** 16" x 61"



**EZ-OFF HAND TRUCK**

Load and unload quicker with no gaps between stacks. Step down EZ-off bar backs truck out from under boxes with ease. Load can be stationed right against another stack to save valuable space. Tube steel construction. 7" x 13" nose plate. 8" mold-on rubber wheel with metal stair glides. 800 lb. capacity

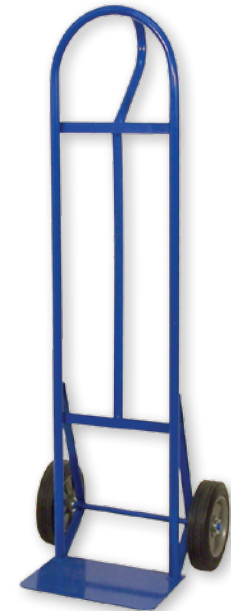
**Model # 100** 55" H 34 lbs.



**ECONOMY HAND TRUCK**

A quality steel hand truck at an affordable price. 8" rubber wheels. 600 lb. capacity

**Model # 5506-8** 51" H



RENTAL EQUIPMENT | MOVING EQUIPMENT | FURNITURE PADS | WAREHOUSE EQUIPMENT | APPLIANCE DOLLIES | **HAND TRUCKS** | VAN EQUIPMENT | CARGO CONTROL | RAMPS/WALK BOARDS | FORMS | LABELS | BOXES | PACKING MATERIAL

### B&P HAND TRUCKS



#### A12E-B10-CA2-D5

Single pin handle. 18" x 7 1/2" nose plate. 500 lb. capacity.

**Model # A12E-B10-CA2-D5** 52" H 26 lbs. (10" full pneumatic tires)

**Model # A12E-B10-CA2-D6** 52" H 26 lbs. (10" carefree foam tires)



#### A7-B10-CA2-D5

Single loop handle. 18" x 7 1/2" nose plate. 10" full pneumatic tires. 500 lb. capacity.

**Model # A7-B10-CA2-D5** 52" H 26 lbs.



#### A31SB10-CA1-D10

Double loop handles with high back loop design. 14" x 7 1/2" nose plate.

10" baloon tires. 500 lb. capacity.

**Model # A31SB10-CA1-10** 55" H 24 lbs.



**B&P HAND TRUCKS**

**A1-B4-CA1-D2**

Horizontal loop handle with curved back frame.  
 14" x 7 1/2" nose plate. 10" semi-pneumatic tires.  
 500 lb. capacity.

**Model # A1-B4-CA1-D2**     40" H   28 lbs.



**A1-B2-CA2-D12**

Horizontal loop handle. 18" x 7 1/2" nose plate.  
 8" mold-on rubber tires. 500 lb. capacity.

**Model # A1-B2-CA2-D12**     40" H   22 lbs.



**A1-B10-CA1-D12**

Horizontal loop handle. 14" x 7 1/2" nose plate.  
 8" mold-on rubber tires. 500 lb. capacity.

**Model # A1-B10-CA1-D12**     40" H   19 lbs.



- RENTAL EQUIPMENT
- MOVING EQUIPMENT
- FURNITURE PADS
- WAREHOUSE EQUIPMENT
- APPLIANCE DOLLIES
- HAND TRUCKS**
- VAN EQUIPMENT
- CARGO CONTROL
- RAMPS/WALK BOARDS
- FORMS
- LABELS
- BOXES
- PACKING MATERIAL

## B&amp;P HAND TRUCKS

**A2-B10-CA1-D5**

Horizontal loop handle with "U" brace for extra load support. 14" x 7 1/2" nose plate.

10" full pneumatic tires. 500 lb. capacity.

**Model # A2-B10-CA1-D5** 44" H 24 lbs.

**A2B10CA1D11-E1C**

Horizontal loop handle with "U" brace for extra load support. 14" x 7 1/2" nose plate.

8" semi-pneumatic tires. Aluminum C-1 stair glides.

500 lb. capacity.

**Model # A2B10CA1D11-E1C** 44" H 24 lbs.

**B&P DETACHABLE DECK**

Smooth aluminum deck for convertible hand trucks.

Form fitted top lip. Spring steel clips hold the deck securely in place. Easy to put on or remove.

Great for carrying small packages.

**Model # E22L** Jr. Deck

**Model # E23L** Sr. Deck



**B&P CONVERTIBLE HAND TRUCKS**

**2 IN 1 Hand Truck Converts from 2 Wheels to 4 Wheels in Seconds**  
**Modular Design means Easy Repairs for Long Dolly Life**  
**Half-Ton Platform Truck Capacity**  
**Strong Lightweight Construction**



**B&P SR.**

- Overall Width: 20"
- Frame Width: 12"
- Overall Length: 56"
- Height (hand truck) 61 1/2"
- Height (platform truck) 46"
- Platform Bed Length 51 1/2"
- Capacity (hand truck) 600 lbs.
- Capacity (platform truck) 1,200 lbs.
- Wheels (hand truck) 10" x 3 1/2"
- Casters (swivel) 5"
- Nose 18" x 9"
- Weight 45 lbs.

**Model # A1-B80-CA2-D5**



**B&P JR.**

- Overall Width: 20"
- Frame Width: 12"
- Overall Length: 43"
- Height (hand truck) 52"
- Height (platform truck) 41"
- Platform Bed Length 38 1/4"
- Capacity (hand truck) 600 lbs.
- Capacity (platform truck) 1,200 lbs.
- Wheels (hand truck) 10" x 3 1/2"
- Casters (swivel) 5"
- Nose 18" x 9"
- Weight 41 lbs.

**Model # B75E-CA2-D5**



RENTAL EQUIPMENT | MOVING EQUIPMENT | FURNITURE PADS | WAREHOUSE EQUIPMENT | APPLIANCE DOLLIES | **HAND TRUCKS** | VAN EQUIPMENT | CARGO CONTROL | RAMPS/WALK BOARDS | FORMS | LABELS | BOXES | PACKING MATERIAL

**A1 HANDLE**

Popular "U" loop handle. Designed for comfort and easy operation.

**Model # A1**

**A2 HANDLE**

Basic loop handle with "U" brace for extra load support.

**Model # A2**

**A7 HANDLE**

Single vertical loop handle.

**Model # A7**

**A12E HANDLE**

Single pin handle with ergonomic pistol grip for easier leverage.

**Model # A12E**

**A31S HANDLE**

Dual loop handles. Extra tall 55" height.

**Model # A31S**

**FRAME STYLE B10**

Straight back frame to provide structure and support to the hand truck.

**Model # B10**

**FRAME STYLE B2**

Straight lattice back for general use and transporting smaller packages.

**Model # B2**

**FRAME STYLE B4**

Curved lattice back frame for carrying round or flat loads.

**Model # B4**

**A11E HANDLE**

Standard double pistol grip handle. Curved out to meet the operator's hand.

**Model # A11E**

**STAIR CLIMBER**

Cast aluminum sliders with replaceable low-friction polymer skid bars.

**Model # E1C**

**EXTRUDED CHANNEL EXTENSION**

**Model # E2F** 20" L x 12" W (Front Mount)

**Model # E3F** 30" L x 12" W (Front Mount)

**Model # E2R** 20" L x 12" W (Recessed Mount)

**Model # E3R** 30" L x 12" W (Recessed Mount)

**"U" FRAME EXTENSIONS**

Aluminum frame extensions for additional load height.

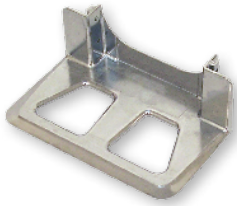
**Model # E52** 52" H

**Model # E55** 55" H

**Model # E60** 60" H

**Model # E68** 68" H





**TYPE CA1 NOSE**

Cast Aluminum  
14" W x 7 1/2" D  
**Model # CA1**



**TYPE CA2 NOSE**

Cast Aluminum  
18" W x 7 1/2" D  
**Model # CA2**



**TYPE CA3 NOSE**

Cast Aluminum  
14" W x 12" D  
**Model # CA3**



**TYPE C3 NOSE**

Extruded aluminum  
14" W x 7 1/2" D  
**Model # C3**



**TYPE C8 NOSE**

Extruded aluminum  
16" W x 12" D  
**Model # C8**



**TYPE C6 NOSE**

Extruded aluminum  
18" W x 9" D  
**Model # C6**



**PNEUMATIC WHEEL**

Pneumatic tire on a bolt together rim with ball bearing hub. 10"  
**Model # D5**



**FOAM WHEEL**

Foam tire with ball bearing hub. Performs like a pneumatic tire but doesn't go flat. 10"  
**Model # M1010**



**RUBBER WHEEL**

Solid rubber tire on one-piece polyolefin rim with ball bearing hub. 10"  
**Model # D2**



**RUBBER WHEEL**

Solid rubber tire on one-piece polyolefin rim with ball bearing hub. 8"  
**Model # 825**



**MOLD-ON WHEEL**

Mold-on rubber tire on aluminum rim with ball bearing hub. 8"  
**Model # D12**

**REPLACEMENT INNER TUBES FOR PNEUMATIC WHEEL Model # 8023-011**



**ALUMINUM CURB RAMP**

Lightweight, corrosion-resistant aluminum. Safety walk strips for secure footing. Hand hole for easy handling. Good for curbs up to 6" H. 27" x 27"  
**Model # NCRU2727**



**ALUMINUM CURB RAMP**

Lightweight, corrosion-resistant aluminum. Raised punch holes provide superior traction. Hand hole for easy handling. Good for curbs up to 6" H. 27" x 27"  
**Model # CRP2727**



**ALUMINUM CURB RAMP**

Lightweight, corrosion-resistant aluminum. Diamond tread surface for secure footing. Hand hole for easy handling. Good for curbs up to 6" H. 24" x 26"  
**Model # CR24X26**